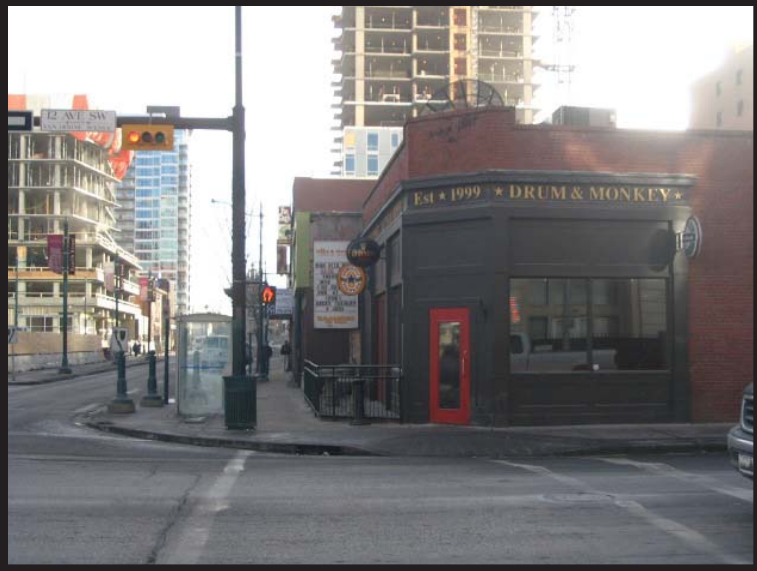


1201 & 1205 1 Street S.W.



FEATURES. . . .

- Superiorly located retail investment.

WWW
avenuecommercial.com

Toll Free: 1-800-750-6766

AVENUE
COMMERCIAL

Suite 40, 308 - 11th Avenue SE

Calgary, AB T2G 0Y2

Phone: (403) 802-6766

Fax: (403) 802-6768

This brochure is intended for information purposes only and should not be relied upon for accurate factual information by the recipients hereof. The information contained herein is based on information which Avenue Commercial deems reliable, however, Avenue Commercial assumes no responsibility for the degree of accuracy of such information, nor does Avenue Commercial represent or warrant the information contained herein. Recipients hereof should conduct their own investigations to determine the accuracy of information contained herein. The information contained herein is subject to change without notice.

1201 & 1205 1 Street S.W. Calgary, Alberta

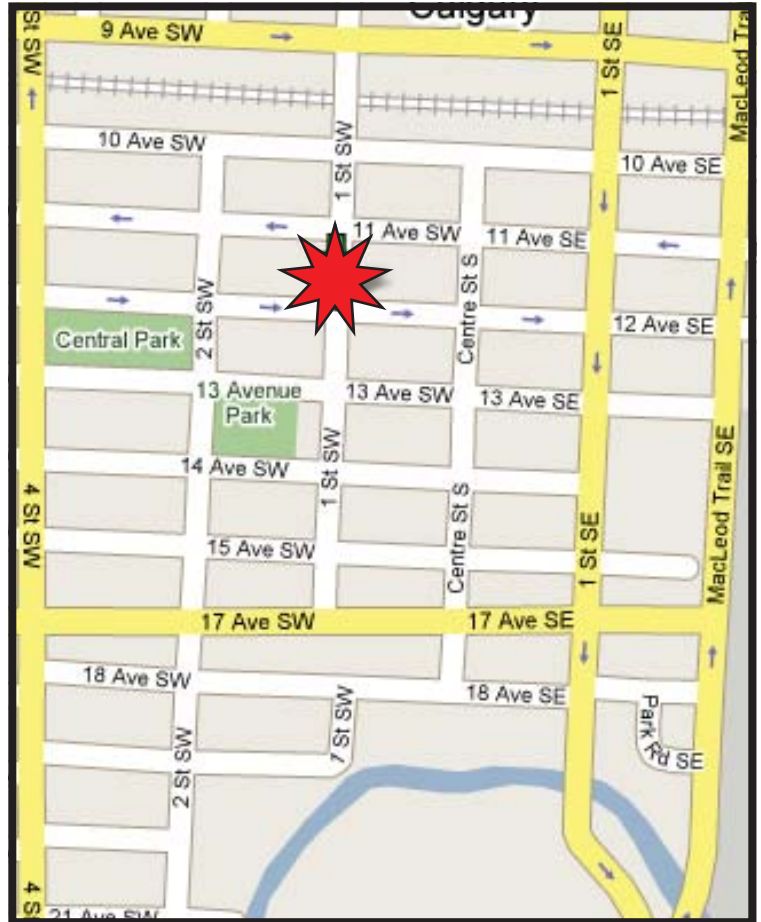


For Sale

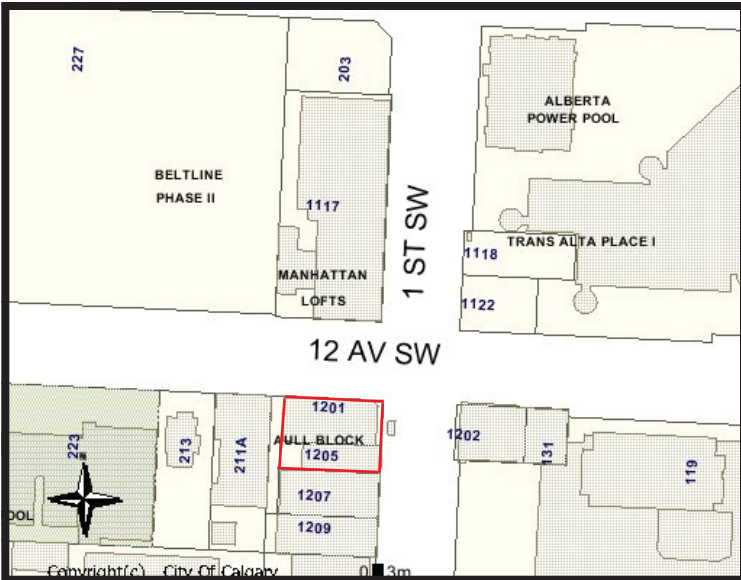
PROPERTY DESCRIPTION

District: Beltline
Address: 1201 & 1205 1 Street SW
Site Area: 7,444 sq. ft
Building Size: 5,979 sq. ft
Zoning: Direct Control 72Z 84
Current NOI: currently being negotiated
Asking: \$3.5 M

MAP



LOCATION MAP



CONTACT INFORMATION

Jim Martin
(403) 252-8260
jmartin@avenuecommercial.ca

www.avenuecommercial.com

Toll Free: 1-800-750-6766



Suite 40, 308 - 11th Avenue SE
Calgary, AB T2G 0Y2
Phone: (403) 802-6766
Fax: (403) 802-6768

This brochure is intended for information purposes only and should not be relied upon for accurate factual information by the recipients hereof. The information contained herein is based on information which Avenue Commercial deems reliable, however, Avenue Commercial assumes no responsibility for the degree of accuracy of such information, nor does Avenue Commercial represent or warrant the information contained herein. Recipients hereof should conduct their own investigations to determine the accuracy of information contained herein. The information contained herein is subject to change without notice.